

OFEG-TECH Meeting

25th September, 2012

Texel, NL



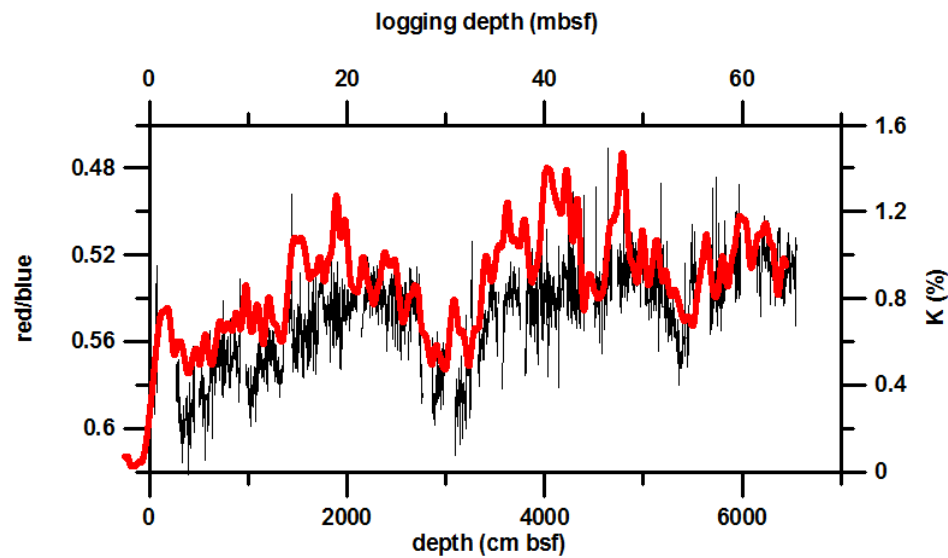
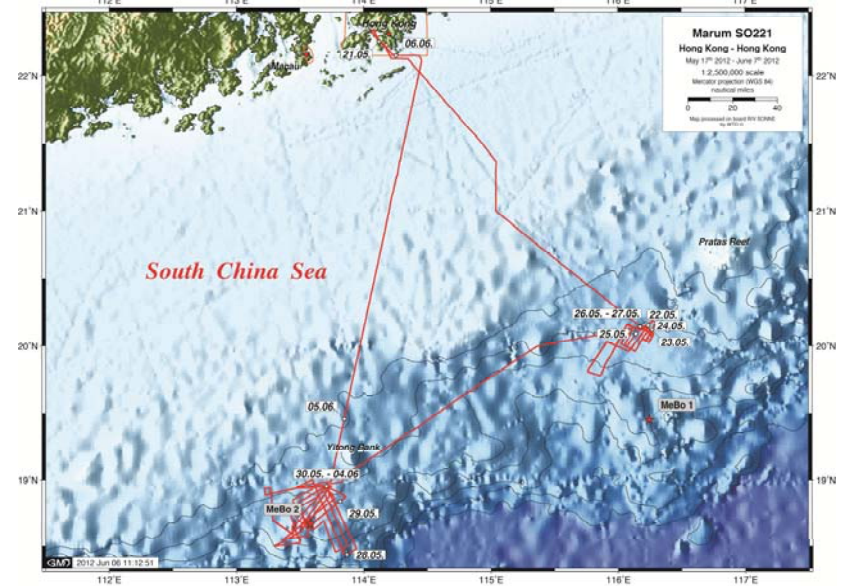
- **MeBo 200**
- **ROV Quest**
- **AUV Seal**
- **ROV Cherokee**

Marum-MeBo

RV Sonne Cruise 221
 Hongkong - Hongkong
 17.5. – 7.6.2012



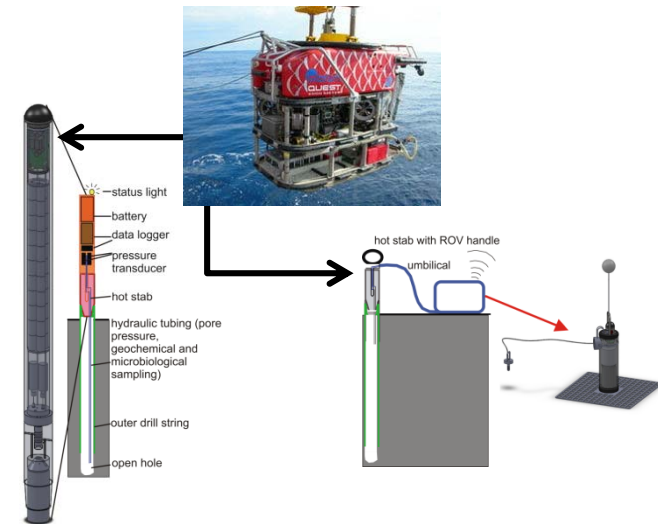
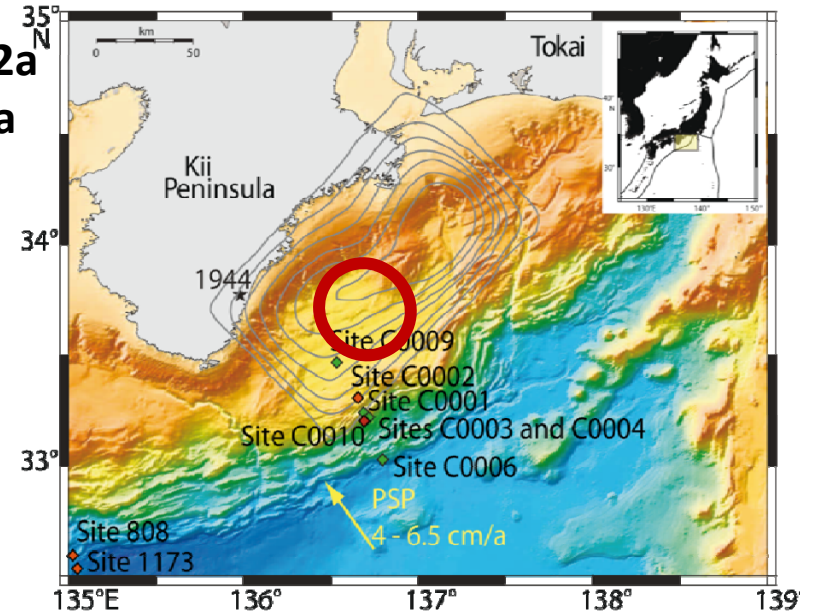
Drilling long cores at two sites of the South China Sea for reconstruction South East Asia Monsoon variability



Marum-MeBo

***RV Sonne* Cruise 222a**
Hongkong - Nagoya
8.6. – 1.7.2012

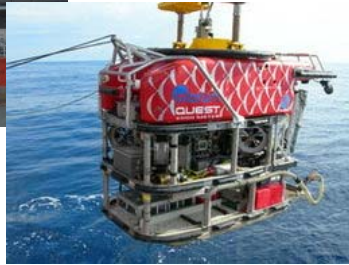
**Drilling and coring
 Mud volcanoes in
 the Kumano Basin**



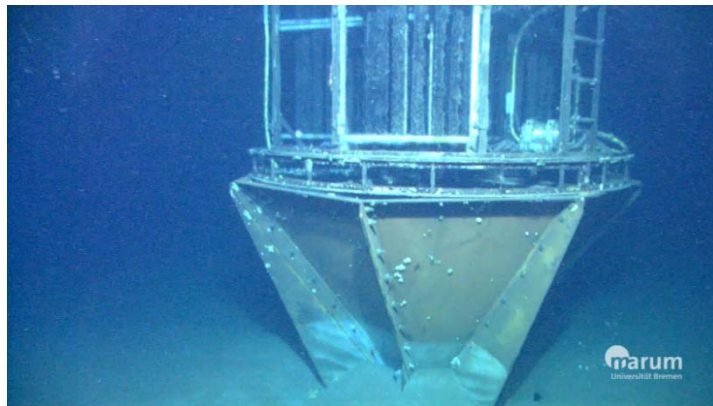
Marum-Quest



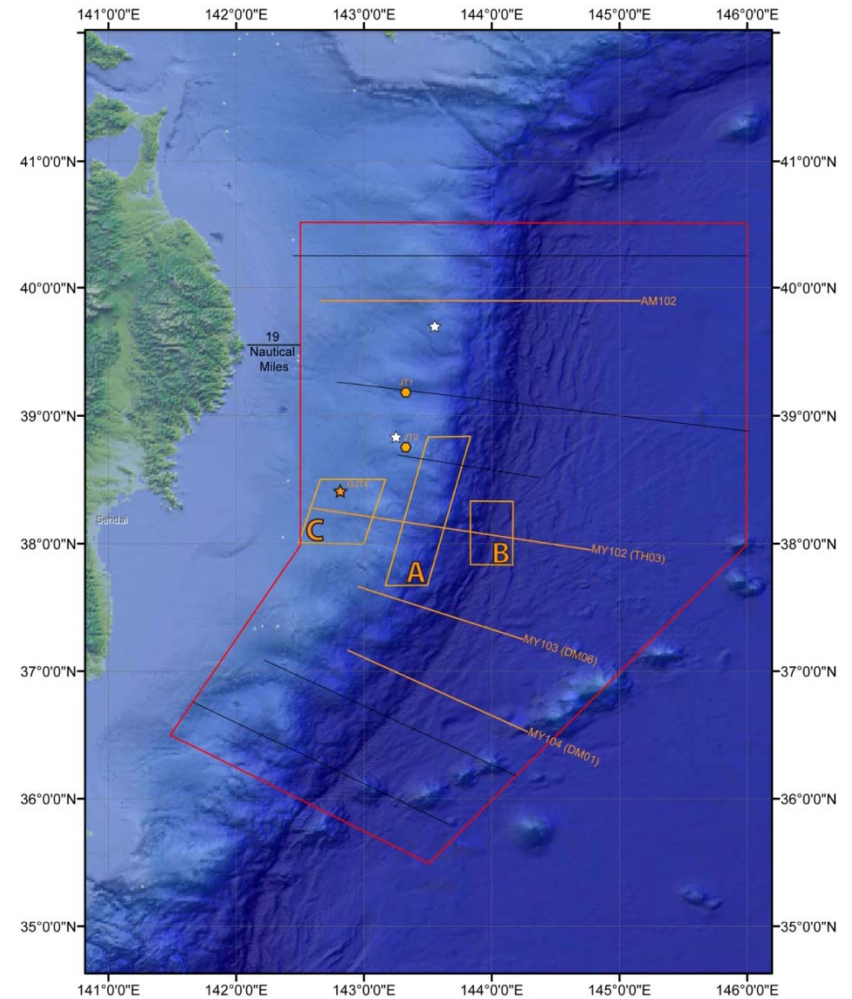
***RV Sonne* Cruise 219a
Yokohama - Yokohama
8th – 22nd March 2012**



**Installation of deep-sea observatories with ROV Quest
and high resolution mapping of changes of the seafloor
with AUV Seal off Japan**



Working area for R/V Sonne Cruise
Tohoku/Japan Trench - March/April 2012



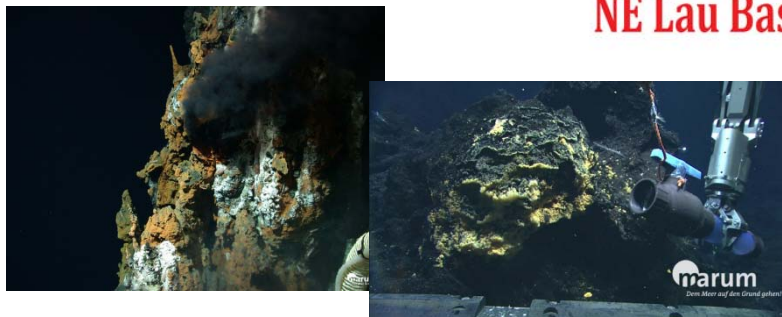
Marum-Quest



Suva- Apia
9th – 26th September 2012



Exploration of volcanic vents and hot springs



Submarine Ring of Fire 2012
NE Lau Basin

RV Roger Revelle (USA)



Owned by *Scripps Inst. of Oceanography*
Launched 1995
Tonnage: 2155t
Length: 83.5m
Beam: 16m
Propulsion: diesel-electric 2 x 3000hp

Marum-Quest



Adaption:
LARS to A-Frame, 50 Hz Generator, etc



NOAA contract:
28 (!) pages of paragraphs & regulations



Live video stream with live comments from the scientists

[Submarine Ring of Fire 2012: Northeast Lau Basin Expedition Video](#)

[Live Stream](#) | [NE Lau Response Cruise 2009](#) | [Bathymetry Fly-throughs](#) | [Behind the Science](#)

Live Stream
ROV Camera View

(SRoF12) 02:11
See the bathymetry fly-through animation of the Northeast Lau Basin (SRoF12 expedition).

(SRoF12) 00:44
Fly-through from the north to the south along the Northeast Lau basin.

Select a video from the playlist by clicking on an icon featured along the right side of the player window. To learn more about the science and participate in the expedition, go to the [Ring of Fire 2012](#) website or click on the other related links at the bottom of this page. Share the video clips by email with your friends or embed them on your blog.

nnowald@marum.de

Marum-Seal

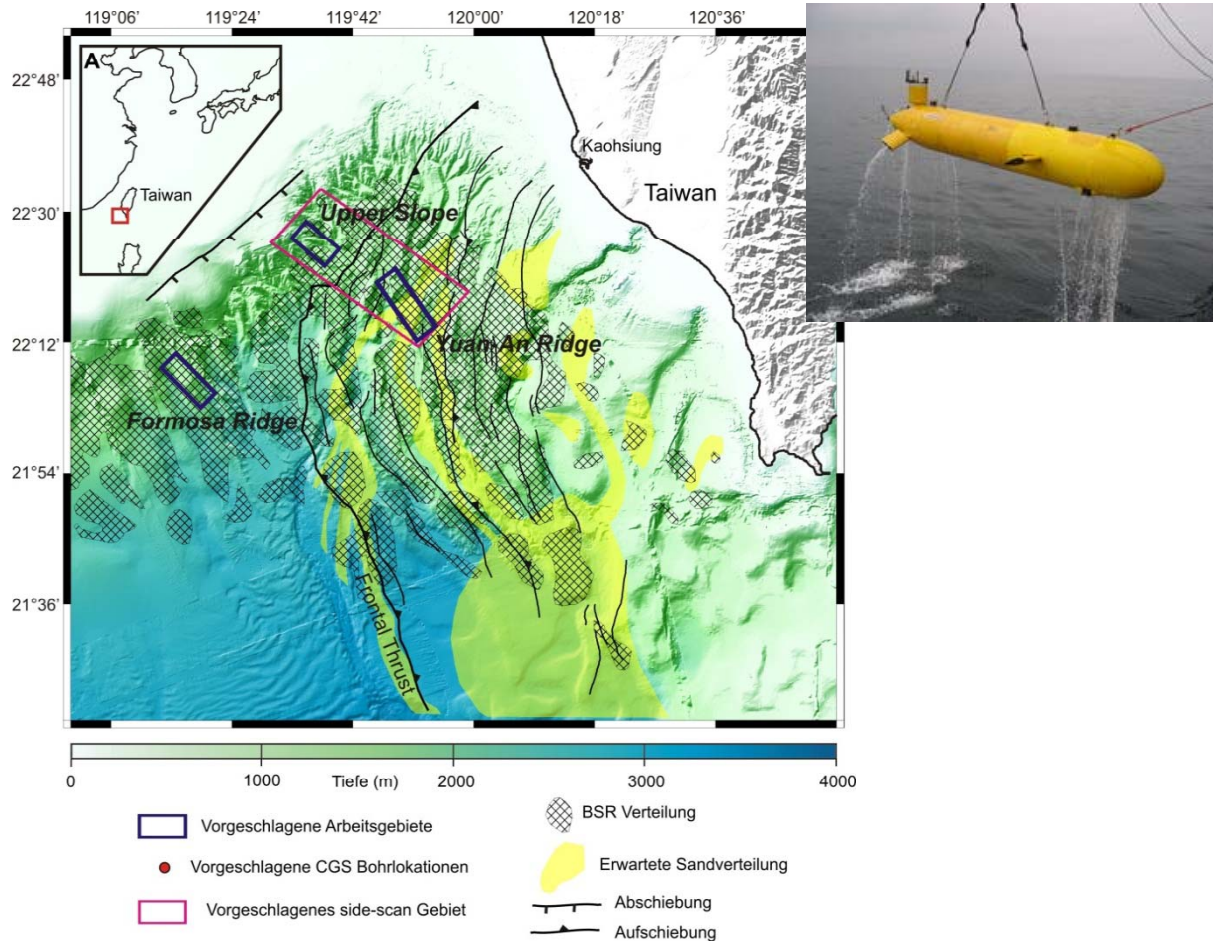
OR-5 Cruise 1 Kaohsiung - Kaohsiung

OR-5 (TW)



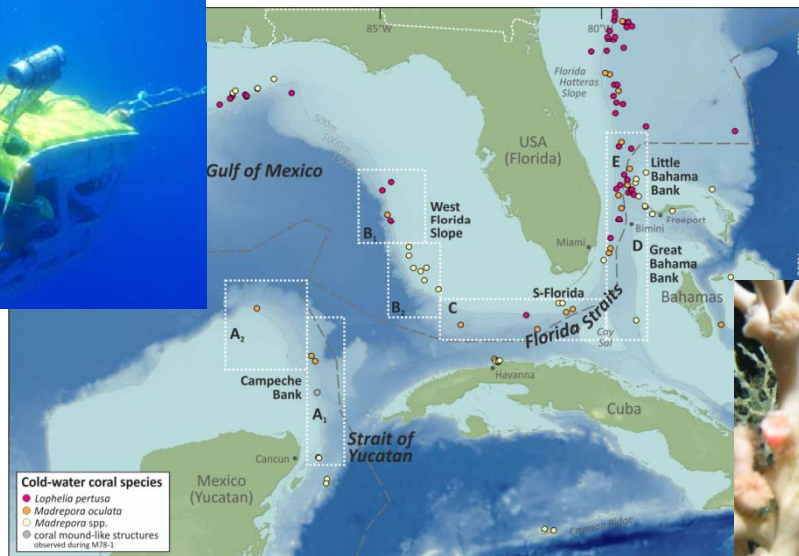
Owned by **TORI**
(*Taiwan Ocean Research Institute*)

Launched 2012
Tonnage: 2700t
Length: 72.6 m
Beam: 15.4 m



High Resolution mapping of the continental margin

Marum-Cherokee



RV MARIA S. MERIAN Cruise 20-4
Bridgetown – Freeport (15.4. – 8.5)

Exploration of Coldwater Coral ecosystems in the Gulf of Mexico



RV HEINCKE Cruise 387
Longyearbyen – Longyearbyen (21.8 – 9.9)
Exploration & quantification of gas emissions west off Svalbard

